

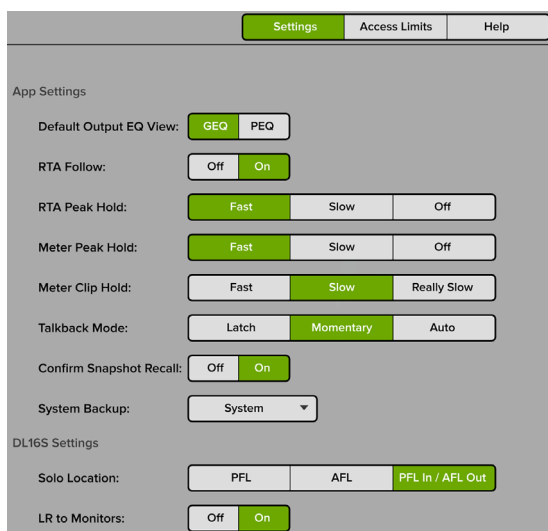
RELEASE NOTES

Mackie Master Fader App V5.0.1 • January 2019

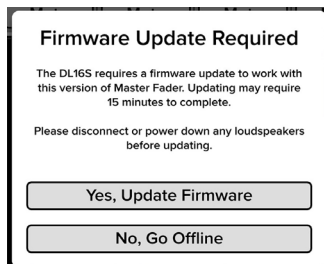
Introduction

These release notes describe changes and upgrades to the Mackie Master Fader app and DL Series mixer firmware since Version 5.0.

New Master Fader app releases may be downloaded and installed directly from the Play Store (Android device) or the App Store (iOS device). Be sure to perform a full System Backup of Master Fader – Tools > Settings – before downloading the app.



The mixer firmware will also need to be updated. This will happen the next time Master Fader is connected to a DL Series mixer. Simply follow the on-screen instructions. Please ensure that there is enough time before the next gig.



NOTE: If your tablet does not reconnect to the mixer after the firmware update completes, power cycle the mixer.

NOTE: If using a Static IP address for your DL Series Mixer, an update may fail to begin properly. Similarly, a force update will fail in the same way. If either of these happen, you will need to temporarily configure the DL hardware to use Dynamic IP addressing.

This can be accomplished by changing to Dynamic IP, disconnecting the hardware from the main network, then configuring a temporary Wi-Fi network with a router directly connected to the DL hardware with no other network connections. When the update is complete, change the DL hardware back to static IP and connect it back to the main network.

NOTE: By default, apps update automatically on iOS and Android. We strongly recommend that you disable automatic updates for apps. Otherwise you run the risk of a long update occurring right in the middle of a show. Ouch!

Android: Go to the Play Store > Tap the "Hamburger" > Settings > Auto-update apps > Do not auto-update apps.

iOS: Go to Settings > iTunes & App Store, then turn Updates off.

More detailed instructions (with screen shots!) may be found in Appendix B of the Reference Guide.

System Requirements

- Android: v6.0 or higher required (requires Google Play Store access to install)
- iOS: v11.0 or higher required

Supported Devices

- DL16S
- DL32S

Master Fader V5.0.1

The following is a list of items that have been added, changed or fixed since Master Fader V5.0.

1. Enhancements, bug fixes and stability improvements (including, but not limited to):

- Improved updating by adding additional informational pop-ups.
- Fixed issues with some show operations on multiple connected control devices.
- Fixed issue where audio did not return quickly after a power cycle.
- Fixed issue where auto view group did not refresh upon snapshot recall.
- Fixed issue where you were unable to place images or icons on a channel after placing an image on a stored preset.
- Fixed issue where deleting shows did not completely delete the show.
- Fixed issue where a matching offline show was loaded instead of the pushed show.
- Fixed issue when recalling an output channel preset did not correctly recall delay and reset temperature.
- Fixed issue when routing talkback to auxes 7 and 8 on a DL32S would crash.
- Fixed issue where show images order was not correct after image deletion.
- Fixed issue where you could not scroll through show images.
- Updated Reference Guide.

Master Fader V5.0

The following is a list of items that have been added, changed or fixed since Master Fader V4.6.2.

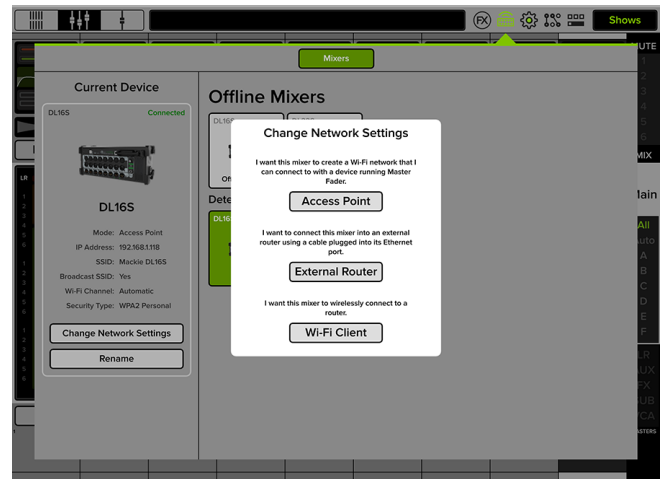
1. Multi-Platform Support

- Master Fader 5.0 works with a plethora of Android and iOS devices. See above for system requirements.

2. Support for DL16S and DL32S

- Master Fader 5.0 adds support for the Mackie DL16S and DL32S mixers.

The internal Wi-Fi for these mixers is controlled via the Devices View. Three modes are available: Access Point, External Router and Wi-Fi Client.



3. FX Overhaul

- New effects have been added to Master Fader V5.0: phaser, tremolo, rotary, mono and stereo chorus, flanger, mod delay and sweep filter manual / auto / LFO.
- All-new rack-inspired FX interface for all DL Series mixers.
- FX are now accessed from a top level menu.



4. Improved Copy-and-Paste

- In addition to channel processing, complete channels (including Aux / Group routing) may be copied-and-pasted.



Copy

Paste Processing

Paste All

5. Improved Overview

- Fader levels are adjustable and solos, mutes and mute groups may be turned on and off in the overview.



6. Devices

- Devices are now accessed from a top level menu.



Known Issues

Features to be added in Future Master Fader 5.x Updates (including, but not limited to):

- Support for the DL806, DL1608, DL32R and DC16
- Support for macOS and Windows
- Support for Import/Export
- Tools menu will be added to the I/O patch
- A confirmation prompt will be implemented when enabling or disabling Use LR Mute, Pre-Fader, Post-Fader, etc.
- A confirmation prompt will be implemented when recalling presets and resetting channels/processors
- An updated Reference Guide will be added
- Split screen operation will be added
- PDF viewing on Android for Help will be added
- Firmware update percentage complete will be added
- Improved portrait view will be added
- Next and previous arrows will be added when naming channels
- A rude solo indicator will be added above the QAP
- Multitouch on EQ, comp / gate and GEQ will be added
- The Shows button will display the current snapshot

Known issues to be addressed in Future Master Fader 5.x Updates (including, but not limited to):

- Sometimes a mixer is not shown on the Devices tab. Force quit Master Fader or turn the Wi-Fi on the device off and on.
- Sometimes two mixers are shown on the Devices tab when only one should be seen.
- Some Android Tablets show the Phone UI instead of Tablet UI
- When a device is Access Limited, users shouldn't be able to push from an iPad or upgrade firmware
- The Help view on smart phones is not centered
- The I/O patch is missing some animations
- The I/O patch is occasionally misaligned
- Dragged QuickAssign buttons overlap the horizontal green line
- After renaming a mixer, devices view shows two detected mixer icons in the list with the same new mixer name

- Vertical lines don't appear when touching PEQ balls
- The Return button on iPads does not move the cursor to the next line
- Users are not taken to the mixer view when recalling a snapshot with Snapshot Recall setting off
- Channel ID popovers get cut off when switching from portrait to landscape mode
- The preset list for input and output compressor is too small
- The Gate Range ball covers the Gate Threshold ball
- Mix Selector popovers appear even when access limits is set to All On
- The maximum (red) slider of the Spectrum Analyzer covers up the +15 dB indicator
- There is no spacing between RTA meters
- Occasionally unable to add channel images or icons after a copy / paste
- Master Fader occasionally creates multiple offline shows on its own
- Switching between I/O tabs resets the view
- The Access Limits All Off button reverts to the Settings page
- The trim slider is off-center in the main mixer view
- The HPF and LPF engage buttons and slope buttons are touching
- Pressing done after naming a channel does not hide the channel menu
- The GEQ slider should be adjustable above and below the grabber
- Touching a channel in the overview doesn't navigate to channel view
- The output selector does not adjust after limiting access to outputs
- Access Limits All On still allows access to LR faders

Technical Support

Please contact our splendid Technical Support heroes if you have any questions.

Web: <http://www.mackie.com/support/>

Phone: 800-898-3211
425-487-4333

During normal business hours, Monday-Friday, Pacific Time.